



## Series 1 & 2

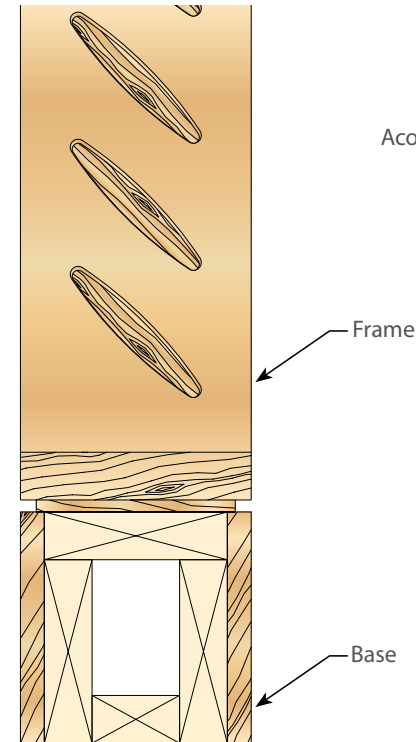


The ACGI Louver System is available in solid wood or wood veneer, depending on slat size, shape and design requirements. Standard dimensions include 2' x 2', 2' x 4', 3' x 3', and 4' x 4' panels; however, custom widths and lengths are available. Louvers come in four standard profiles: straight, bullnose, tapered, and double-tapered. For ceiling applications louvers use ACGI suspension. They can be wall-mounted using Z-Clips or fixed mounts for freestanding walls.

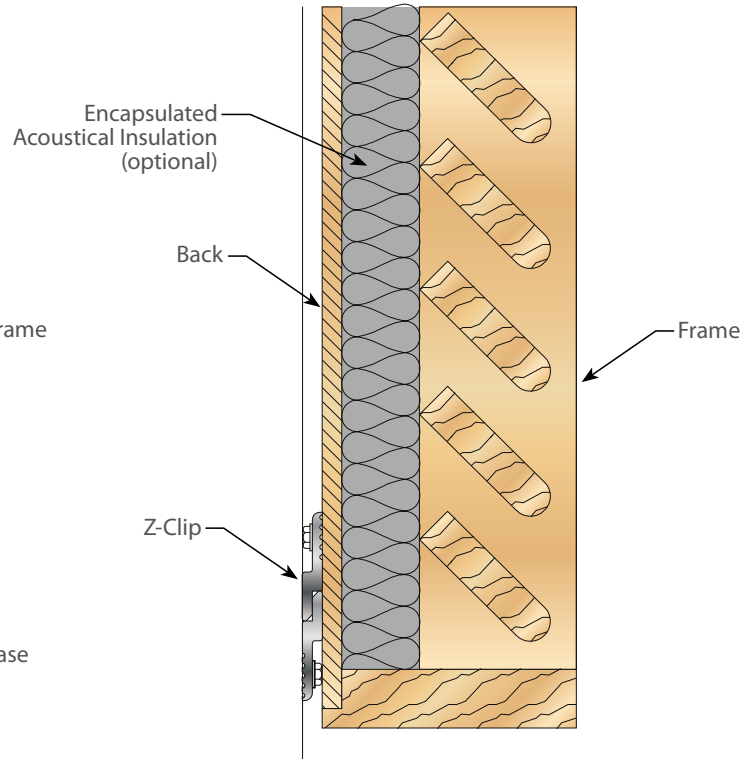
*Louver Series 1 [LV1]* is a standard blade that has an open design, and can also be used for HVAC applications.

*Louver Series 2 [LV2]* has encapsulated acoustical insulation.

*Louver Series 1*  
(fixed mount)



*Louver Series 2*  
(Z-clip wall mount)

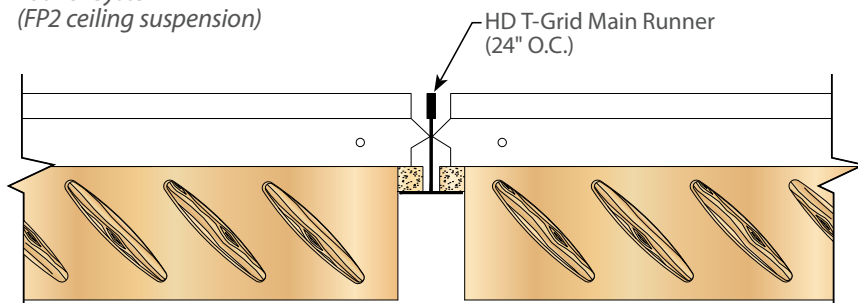


### Louver Series 1 & 2 — Specification Information

Product No.	Blade Width	Thickness	Blade Spacing	Blade Angle	Blade Profile	Panel Width*
LV1-###-E-###-##-#	Up to 48"	½"-2"	Varies	0°-90°	See chart.	Up to 4'
LV2-###-E-###-##-#	Up to 48"	½"-2"	Varies	0°-90°	See chart.	Up to 4'

\*Contact your ACGI Sales Representative for available custom sizes.

Louver System  
(FP2 ceiling suspension)



#### How To Spec It...

Series Spacing Blade Angle  
**LV1-550-E-400-45-1**  
 Blade Width Thickness Profile

*What It Means...* Louver Series 1  
 5.5" blade width, 1" thickness,  
 with 4" spacing at a 45° angle and  
 double-tapered profile.

#### Profile 1 (Double Tapered)



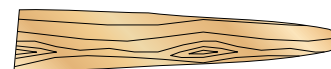
#### Profile 2 (Straight)



#### Profile 3 (Bullnose)



#### Profile 4 (Tapered)



#### Thickness Reference

A	½"
B	5/8"
C	¾"
D	7/8"
E	1"
F	1 1/8"
G	1 1/4"
H	1 3/8"
I	1 1/2"
J	1 5/8"
K	1 3/4"
L	1 7/8"
M	2"
N	2 1/8"
O	2 1/4"
P	2 3/8"

#### LEED CREDIT

MR 4.1, MR 4.2, MR 7, EQ 4.4

#### WOOD SPECIES

ACGI PRODUCT NAME™ is available in a large variety of wood veneers to meet design requirements.

#### FINISHES

ACGI PRODUCT NAME™ can be finished in any of our standard finish options or custom finishes.

#### FIRE RATING

Our veneered products can be provided with a Class A rated core [ASTM-E84].

#### DELIVERY, STORAGE & HANDLING

Material must be stored and installed only in secured ambient environment (humidity range 25%–55%, temperature not to exceed 86°F). All windows, doors and wet-work must be complete before installation. Handle carefully to avoid damaging.

#### WARRANTY

All materials supplied by ACGI are guaranteed against manufacturing defects for one year. Wood stains and colorings can vary over time due to job site conditions and are therefore excluded from this warranty. The contractor shall warrant for one year all work from final acceptance of completed work.

© 2012 Architectural Components Group, Inc. All Rights Reserved. Information provided is accurate at time of printing. ACGI reserves the right to modify any materials without further notification. All product applications are suggestion only. Always conform with local building codes and safety conditions. ACGI does not accept responsibility for the misuse or improper installation of products. Visit [ACGIwood.com](http://ACGIwood.com) for more details. Printed in U.S.A.

