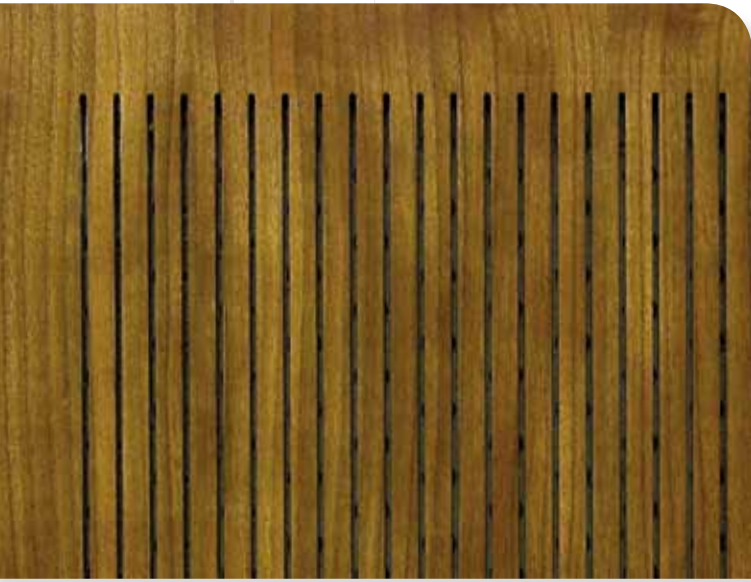


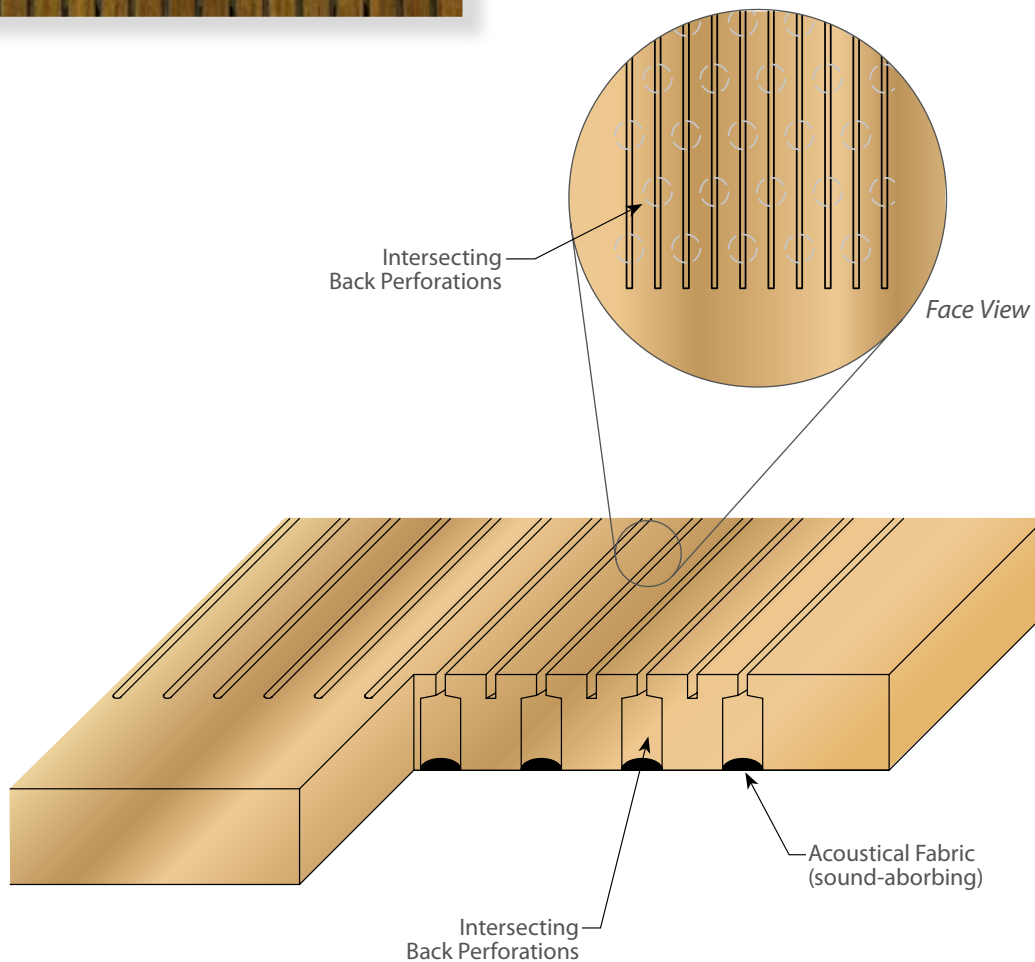


## Series 4



The ACGI Encore™ System combines superior acoustical performance with the aesthetic quality of wood.

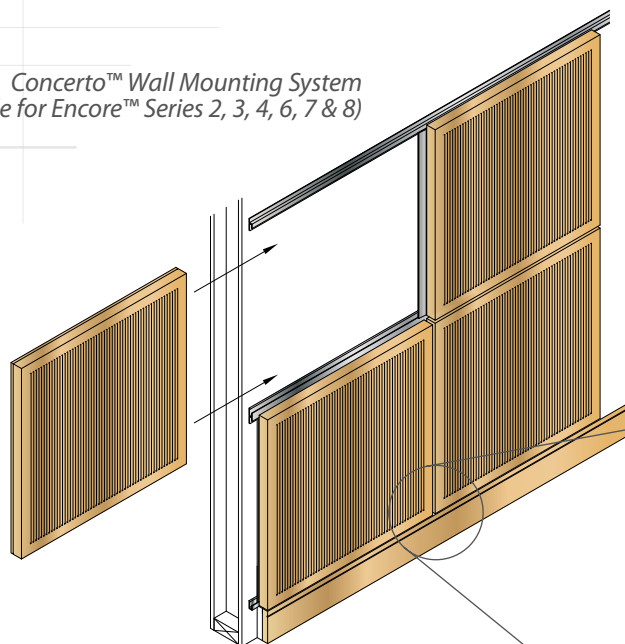
*Encore™ Series 4* [EN4] acoustical wood panels have routed face grooves with intersecting back perforations and integral border. They are available in standard 2'x2', 2'x4', 3'x3', 4'x4' and various custom sizes. In addition to the acoustical fabric factory mounted on the panels, insulation behind the panels increases the acoustical performance. EN4 can be used for wall or ceiling applications.



## Encore™ Series 4 — Specification Information

Product No.	Typical Face Groove Profile	Perforations (on back of face)	Encapsulated Insulation	Width	Length (limited by veneer)	Typical Thickness	Groove Spacing	Weight
EN4-####-C#	2mm U (or larger) Routed Face	Intersecting Holes	No	Up to 5'	Up to 12'	¾"	8, 10, 12, 16, 25, 32mm	3 lbs/sq. ft.

Concerto™ Wall Mounting System  
(available for Encore™ Series 2, 3, 4, 6, 7 & 8)



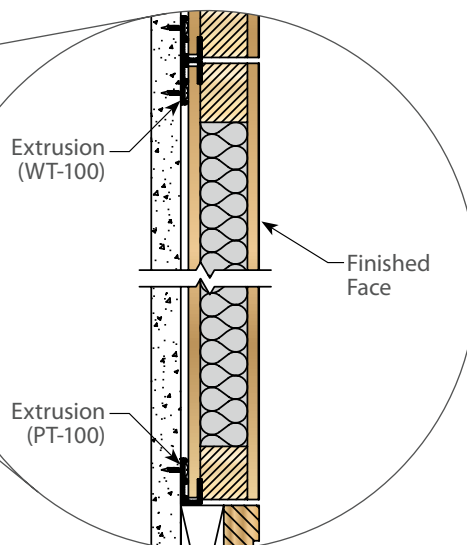
### How To Spec It...

Series Width Panel Thickness ●  
**EN4-3636-C10**  
 Height Groove Spacing

*What It Means...* Encore™ Series 4, 36" x 36" panel, ¾" thick and face grooves 10mm O.C.  
(Grain and face-groove directions must coincide.)

### Thickness Reference

A	½"
B	⅝"
● C	¾"
D	⅞"
E	1"
F	1⅛"
G	1¼"
H	1⅜"
I	1½"
J	1⅝"
K	1¾"
L	1⅞"
M	2"
N	2⅛"
O	2¼"
P	2⅜"



### LEED CREDIT

MR 4.1, MR 4.2, MR 7, EQ 4.4

### ACOUSTICS [ASTM-C423]

NRC of 0.75 (without additional insulation).

NRC of 0.85 (with additional insulation).

### WOOD SPECIES

Encore™ acoustical wood panels are available in a large variety of wood veneers to meet design requirements.

### FINISHES

Encore™ acoustical wood panels can be finished in any of our standard finish options or custom finishes.

### BORDER TRIM

Encore™ acoustical wood panels can be manufactured with custom border trim in different shapes, species and finishes. Please contact your local ACGI Sales Representative to review available options.

### FIRE RATING

Our veneered products can be provided with a Class A rated core [ASTM-E84].

### DELIVERY, STORAGE & HANDLING

Material must be stored and installed only in secured ambient environment (humidity range 25%–55%, temperature not to exceed 86°F). All windows, doors and wet-work must be complete before installation. Handle carefully to avoid damaging.

### WARRANTY

All materials supplied by ACGI are guaranteed against manufacturing defects for one year. Wood stains and colorings can vary over time due to job site conditions and are therefore excluded from this warranty. The contractor shall warrant for one year all work from final acceptance of completed work.